

NEWSLETTER

October 2018

Population Europe

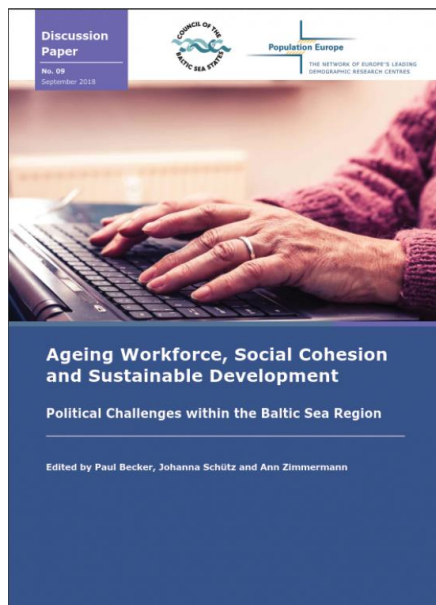
THE NETWORK OF EUROPE'S LEADING
DEMOGRAPHIC RESEARCH CENTRES

Demography drives your future



This is the quarterly newsletter of Population Europe, the network of Europe's leading demographic research centres.

Discussion Papers



Discussion Paper No. 9: Ageing Workforce, Social Cohesion and Sustainable Development

The analyses presented in the Discussion Paper 'Ageing Workforce, Social Cohesion and Sustainable Development' are a result of thorough scientific evidence and discussions among experts from research, policy and societal organisations from eleven Baltic Sea States.

[Read more](#)

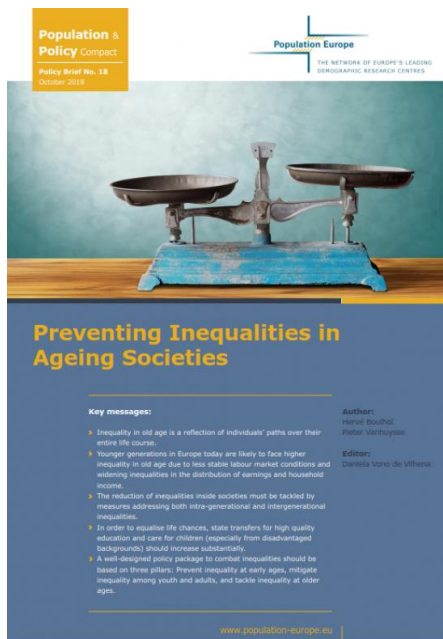


Discussion Paper No. 8: Similar but Different

Social cohesion and cultural integration of immigrants is a recurrent topic in most public discourses in European countries (Algan et al., 2012). The persistent discussion about a dominant, guiding culture in Germany (the so-called Leitkultur-Debatte) or the French debate on the nature of secularism and the challenges of Islam (débats sur la Laïcité) are just some examples. By analysing the integration process of immigrant groups in different national contexts, this Discussion paper puts into question the extent to which similar cultural backgrounds influence the integration of immigrants in the receiving society.

[Read more](#)

Policy Briefs



Preventing Inequalities in Ageing Societies

Inequality in old age is a reflection of individuals' paths over their entire life course. Younger generations in Europe today are likely to face higher inequality in old age due to less stable labour market conditions and widening inequalities in the distribution of earnings and household income.

[Read more](#)



[A One-size-fits-All Solution for Increasing the Employment Level of Older People?](#)

In upcoming decades, population ageing in the Baltic Sea States is inevitable due to long-term population trends such as low birth rates and increasing life expectancy, as well as migration.

[Read more](#)

PopDigests



[Women are More Likely to Reach Extreme Ages – but Men Will Catch Up](#)

More and more people are living until the ages of 100 or 105, becoming so-called centenarians or semi-supercentenarians.

[Read more](#)



[Parents Tend to Live Longer than Childless Individuals – Why is That?](#)

Childless men and women have an overall higher mortality than adults with children, meaning that they die earlier, recent studies show. Mothers and fathers with two biological children have the lowest mortality risks, but it increases for parents with three or more biological children.

[Read more](#)



Being Poor Despite Having a Job: Family Transitions Matter

In a recent paper, researchers Zachary Van Winkle and Emanuela Struffolino addressed the issue of in-work poverty – an alarming phenomenon which is exceptionally common in the United States.

[Read more](#)



Housing Market is Crucial for Higher Fertility

Often fertility rates are analysed at the country level. However, it is also often disregarded that there are economic, political and cultural regional differences within a country, which have a considerable influence on the respective opportunity structure of women and families.

[Read more](#)



Large-Minded Agers: Do Attitudes Towards Immigration Change After Retirement?

When speaking about attitudes towards immigration, one argument is often used: Individuals who compete with immigrants in the labour market are said to be more against immigration than individuals who do not. Empirical support for this argument is widely debated, but still it remains.

[Read more](#)



Measuring Male Fertility Rates by Making Use of Facebook Data

Can social media channels like Facebook be used to analyse fertility data? According to recent research, it can be. In a paper by Francesco Rampazzo, Emilio Zagheni, Ingmar Weber, Maria Rita Testa and Francesco Billari, they sought out to determine if anonymous and aggregate data from Facebook advertising can be a viable source for fertility data.

[Read more](#)

News from the Network

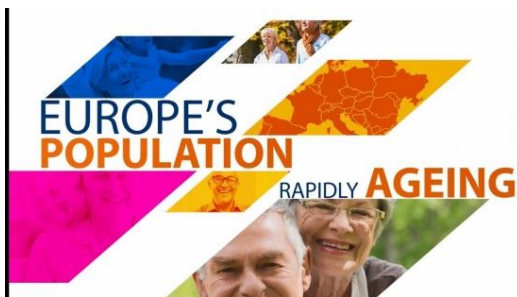


New Partner Institute: CLIC

Population Europe welcomes the Comparative Life Course and Inequality Research Centre (CLIC) at the European University Institute (EUI) as their 32nd partner in the Network of Europe's Leading Demographic Research Centres.

[Read more](#)

Videos



Survey of Health, Ageing and Retirement in Europe

SHARE, the Survey of Health, Ageing and Retirement in Europe, is a multidisciplinary longitudinal survey for the study of the social, economic and health situation of people aged 50 and older in Europe.

[Read more](#)

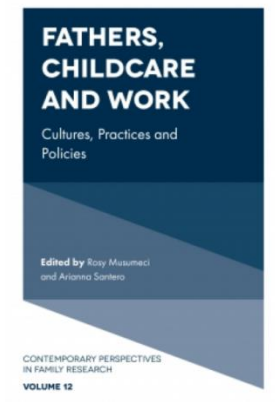
Books and Reports



Levels and Trends in Child Mortality Report 2018

A new study by the UN Inter-agency Group for Child Mortality Estimation released on 18 September 2018 reveals that the world has made considerable progress in reducing child mortality since 1990.

[Read more](#)



[Fathers, Childcare and Work: Cultures, Practices and Policies Vol: 12](#)

The work-life balance of fathers has increasingly come under scrutiny in political and academic debates. This collection brings together qualitative and quantitative empirical analyses to explore fathers' approaches to reconciling paid work and care responsibilities.

[Read more](#)



[Challenges in Long-term Care in Europe - A Study of National Policies 2018](#)

The study, which includes country reports and a synthesis report, provides a brief description of the main features of the national long-term care systems in 35 European countries - EU Member States as well as EFTA and enlarging countries.

[Read more](#)



[Elternschaft und Wohlbefinden / Parenthood and Well-being](#)

Bernhard Riederer (Wittgenstein Centre, IIASA, VID/ÖAW, WU), Österreichische Akademie der Wissenschaften) untersucht Auswirkungen der Elternschaft auf Glück und Zufriedenheit. Er zeigt, dass das individuelle und gesellschaftliche Umfeld beeinflussen, welche Konsequenzen Kinder für das Wohlbefinden der Eltern haben.

[Read more](#)

Events

Family and Fertility over the Life Course in Europe

15 - 16 November 2018, St Andrews

This international symposium brings together researchers in the areas of family, fertility, migration and the life course to discuss recent research and the challenges that changing demographic realities pose to European countries at individual, regional and societal levels.

[More information](#)

1st Joint ESS & SHARE User Meeting

23 November 2018, Vienna

The meeting aims at discussing research findings based on analyses of ESS and/or SHARE data from a comparative and/or longitudinal perspective, as well as methodological contributions.

[More information](#)

Inaugural WorldPop School on Spatial Demography

04 – 07 December 2018, Southampton

The WorldPop School provides an exciting opportunity to learn about WorldPop's methods and datasets, and get hands-on training in using them. Participants will experience a mixture of Geographic Information System (GIS)/GDAL/R based training, lectures, discussions and interactive activities to build their expertise in producing and using geospatial population data.

[More information](#)

Call for Papers

Call for Papers: BIGSSS Summer School in Computational Social Science: Data-driven Modeling of Migration

Deadline: 30/11/2018

BIGSSS cordially invites applications for participation as an expert and project leader in their computational social science (CSS) summer school on data-driven modeling of migration to take place in Cagliari (Sardina, Italy), hosted by University of Cagliari from June 10 to 21, 2019.

[More Information](#)

Study & Career

Population Europe has created a new format for its [Jobs Newsletter](#). We have created a Google Group that will allow you to determine how often you receive updates about the latest job postings and to receive notifications about study and career opportunities as soon as they are posted online. [Join today!](#)

Full Professor in Methods for Empirical Social Research

University of Cologne
Country: Germany
Deadline: 26 November 2018

Postdoctoral Researcher

Erasmus University Rotterdam
Country: Netherlands
Deadline: 15 November 2018

Tenure Track Position

Pompeu Fabra University
Country: Spain
Deadline: 10 December 2018

Interdisciplinary Postdoctoral Fellowships at Harvard Pop Center

The Harvard Pop Center
Country: United States
Deadline: 03 December 2018

Imprint

Dr Andreas Edel, Executive Secretary
Population Europe Secretariat
Max Planck Institute for Demographic
Research
Phone + 49 30 2061 383 - 30
E-Mail: press@population-europe.eu

Applying the European Union's General Data Protection Regulation, we would like to inform you that:

- We only use contact information which you have explicitly provided or which is publicly available on your organisation's website, and only for the purpose of keeping you informed about recent research results, publications and events, invitations to expert meetings, workshops and conferences that might be of interest to you.
- You are entitled to request a summary about the address details we have stored for you at any time. Please contact press@population-europe.eu.
- You can unsubscribe from any of our services at any time [here](#).
- You can read about our data protection policy [here](#).
- You can register separately for our job newsletter [here](#). Please note that the job newsletter is organised through a Google group, which allows you to receive job and fellowship advertisements at a timely manner, typically after the partner institutions of Population Europe have posted them so that you will not miss any deadline. For this service, individual sign-up and permission to store your contact details within the Google group is required.